



NOVEMBER 17, 2015

MEASURE G LOCAL BOND

LEGACY OF EXCELLENCE
ASSURING CONTINUED SUCCESS

Orin Williams
Facilities and Governmental Relations

nearly

TRIPLED

Measure G



**\$200
Million**

**\$597.5
Million**



468
New
Classrooms

580
Portables
Removed



**Re-claimed
12 Acres of
Open Space
Valued at
\$22.3
Million**



93
Major Projects

1,319
Classrooms Improved

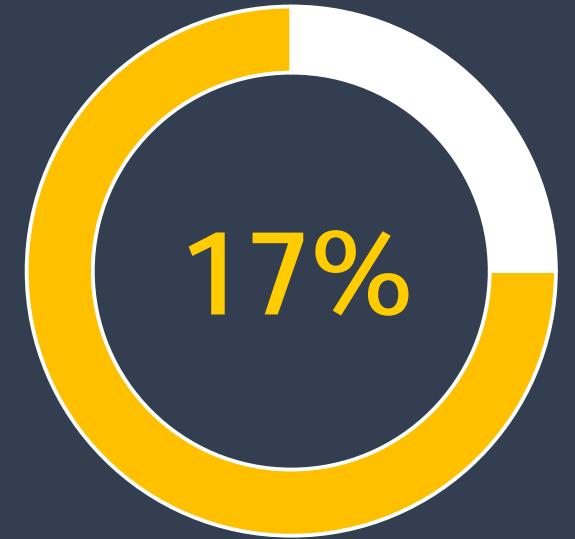
39,570
Students Impacted





Energy Savings

7.1 MWh per year
reduction



Water Savings

98,451,936 gallons
per year reduction



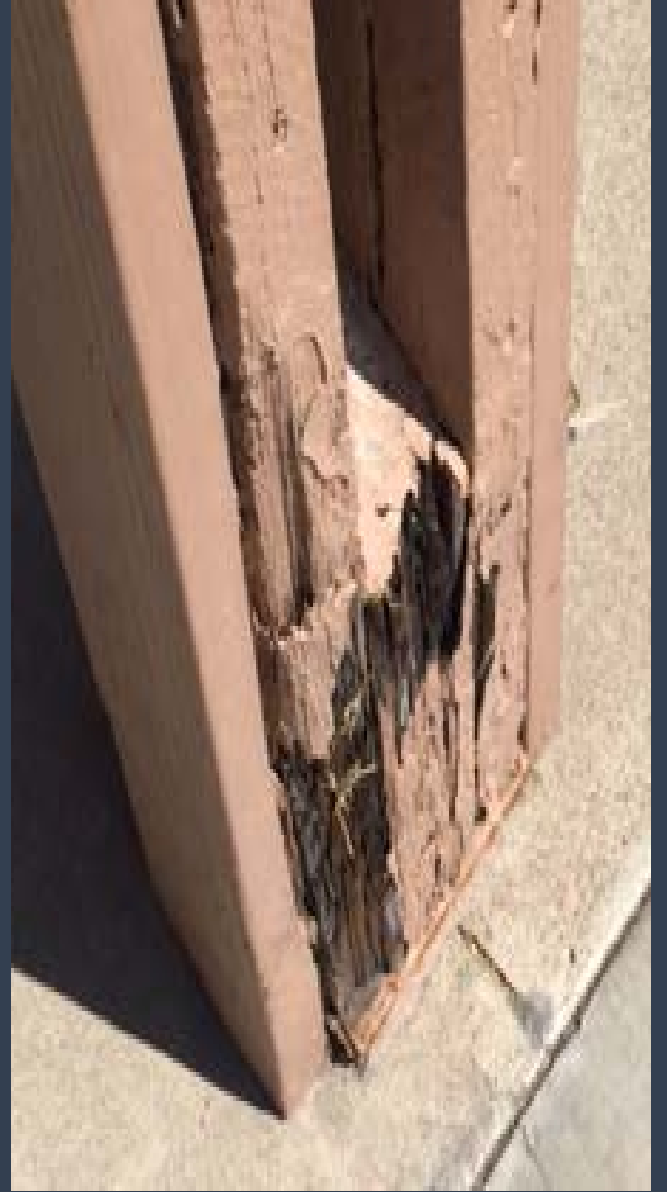
Still more
to do...

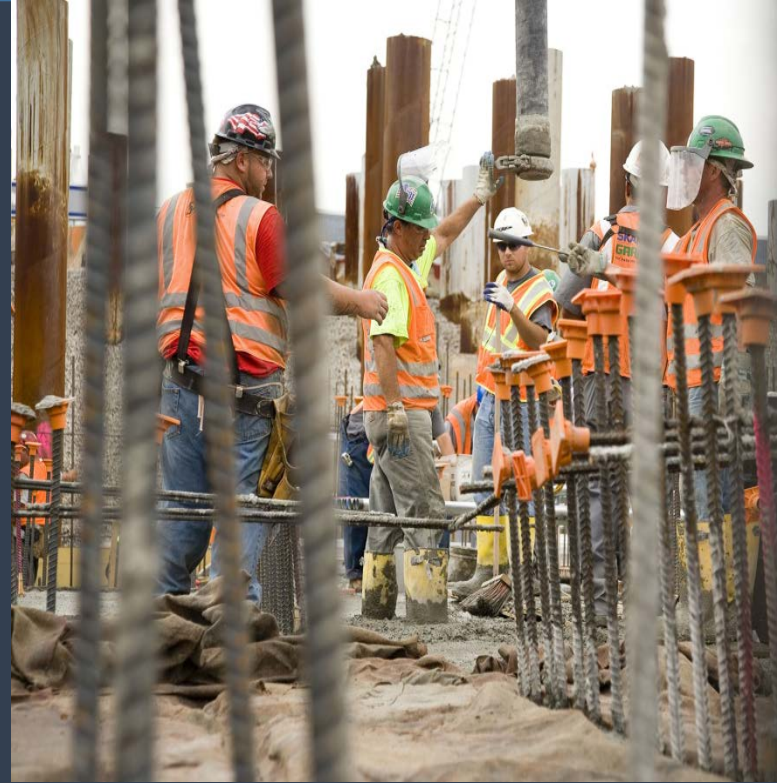


6 SCHOOLS
(Portable-to-Permanent)



**21st Century
LEARNING**

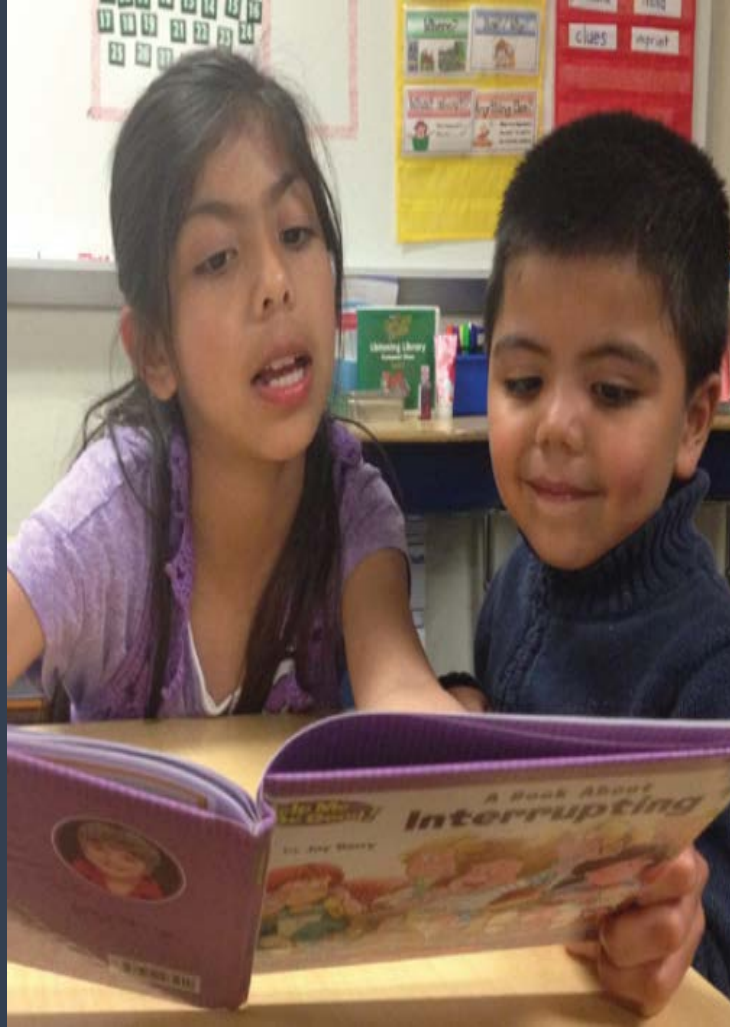




Increase Property Values

Create Local Jobs

Creates Open Space



Impacts LEARNING

ASSURE CONTINUED SUCCESS

Research has repeatedly found a difference of 5-17 percentile points between achievement of students in poor buildings and those students in above-standard buildings. ¹

¹ Glen I. Earthman, "School Facilities Conditions and Student Academic Achievement." Report prepared for Williams v. State of California, UCLA, 2002, pp. 8-9.